



Hjort-conveyor series 800 is a track system for manual transfer of load carriers. The system can be built up using switches, turntables and separate drive chains for transport through, for example, ovens. Ergonomically correct loading and unloading using the height adjustable stations.

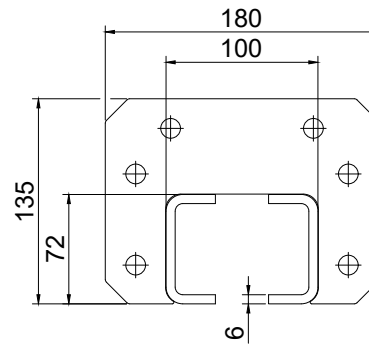
**Maximum load 500 kg per trolley**

### Track

Order number  
080010

#### Technical specifications

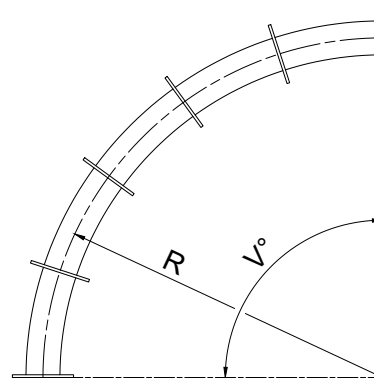
$I_x = 235 \times 10^4 \text{ mm}^4$   
 $W_x = 29 \times 10^3 \text{ mm}^3$   
 $I_y = 97 \times 10^4 \text{ mm}^4$   
 $W_y = 47 \times 10^3 \text{ mm}^3$   
 $A = 1630 \text{ mm}^2$   
Vikt = 12,7 kg/m



### Horizontal curve 90°

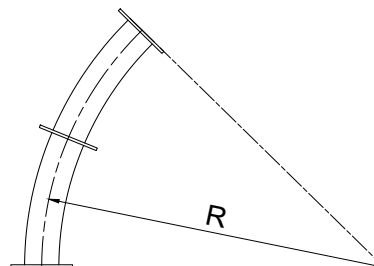
Order number  
080070 - R700  
080080 - R1000

Other angles can be ordered



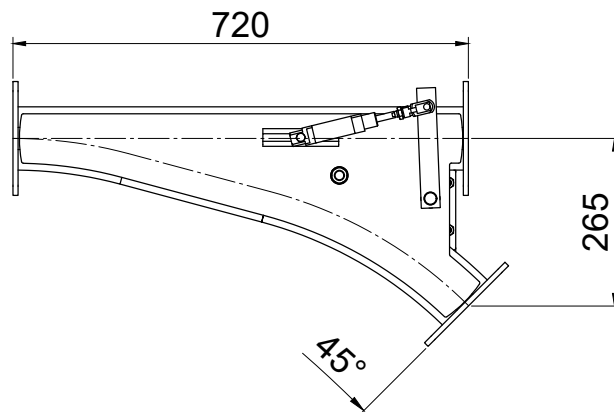
### Horizontal curve 45°

Order number  
080075 - R700  
080085 - R1000



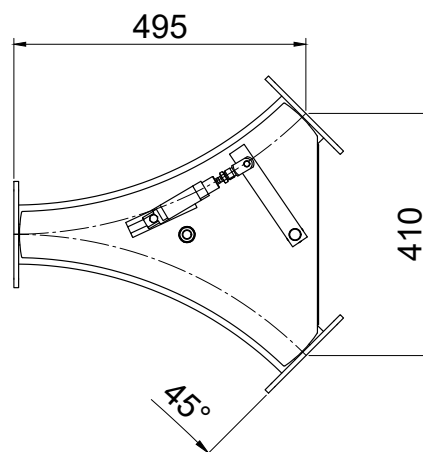
**Switch 45°**

Order number  
1-26474 (left)  
1-26475 (right)



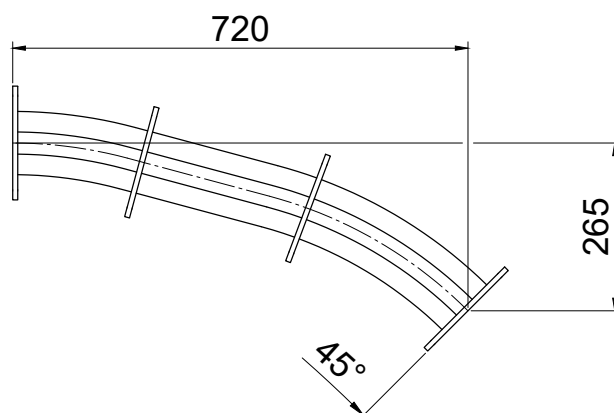
**Y-switch**

Order number  
1-26489



**Switch curve 45°**

Order number  
1-26555 (left)  
1-26556 (right)

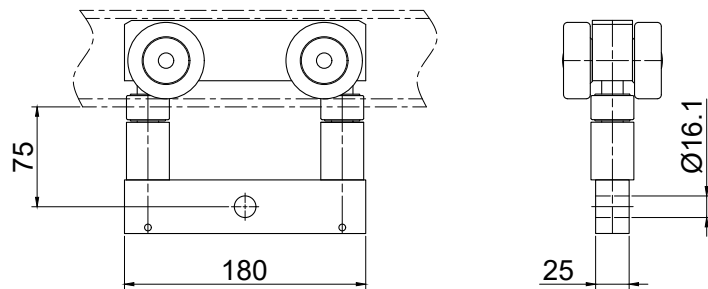


### Trolley

Order number

350500

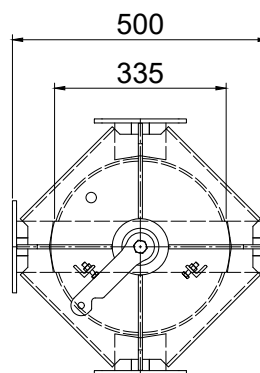
Can be fitted with a joint  
bar to interconnect two  
trolleys.



### Turn table for single trolley

Order number

1-25713



### Turn table for double trolley

Order number

1-26685

