



Hjort-conveyor series 500 is a track system for manual transfer of load carriers. The system can be built up using switches, turntables and separate drive chains to handle difference in height and for transport through, for example, ovens. Ergonomically correct loading and unloading using the height adjustable stations.

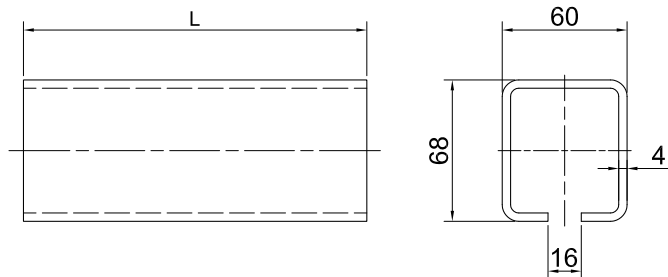
Max load 500 kg

Track

Order number
100010

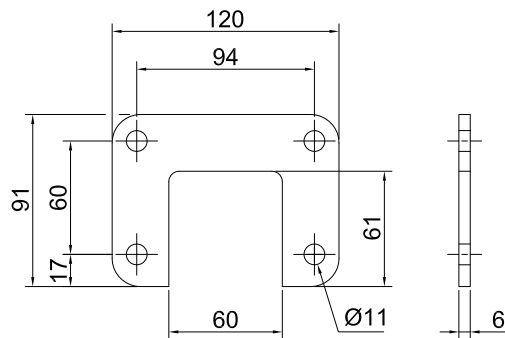
Technical specifications

$I_x = 52 \times 10^4 \text{ mm}^4$
 $W_x = 14 \times 10^3 \text{ mm}^3$
 $I_y = 48 \times 10^4 \text{ mm}^4$
 $W_y = 16 \times 10^3 \text{ mm}^3$
 $A = 835 \text{ mm}^2$
 Weight = 6.25 kg/m



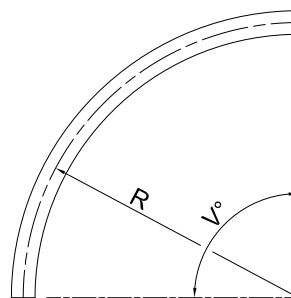
Flange

Order number
100600



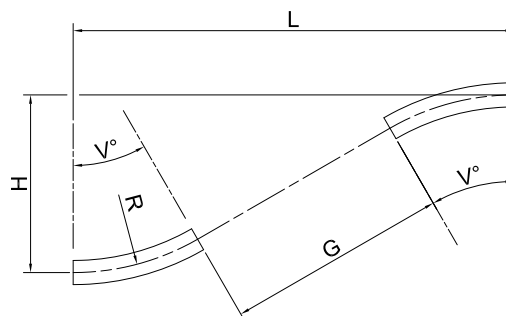
Horizontal curve 90°

Order number
 100050 - R 315
 100060 - R 500
 100070 - R 700
 100080 - R 1000



Vertical curve 45°

Order number
 100100 - R 700 up
 100110 - R 700 down
 100131 - R 1200 up
 100132 - R 1200 down
 100135 - R 2000 up
 100136 - R 2000 down



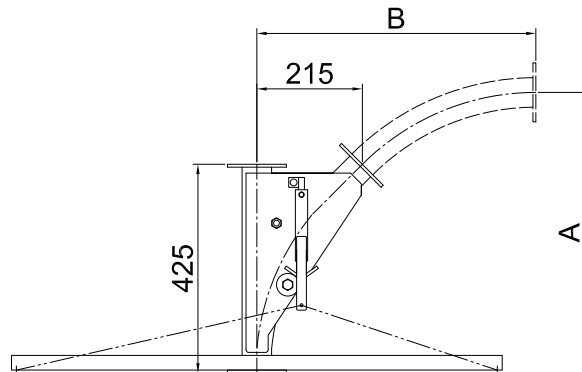
Switch 45°

Order number

050225 (left)

050235 (right)

The switch is supplied as standard for manual control. Can also be equipped with pneumatic control.



Installation measurement with horizontal curve

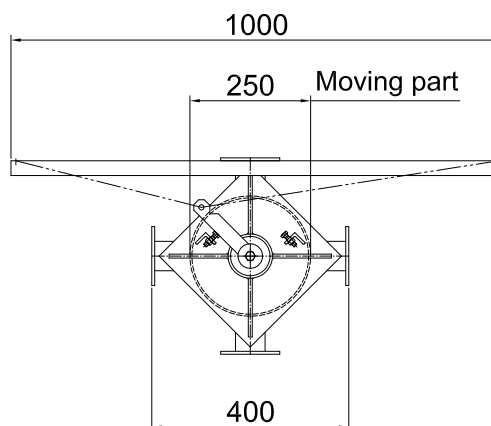
Radius	A	B	Ord. no.
500	570	570	050240
700	630	710	050241

Turntable

Order number

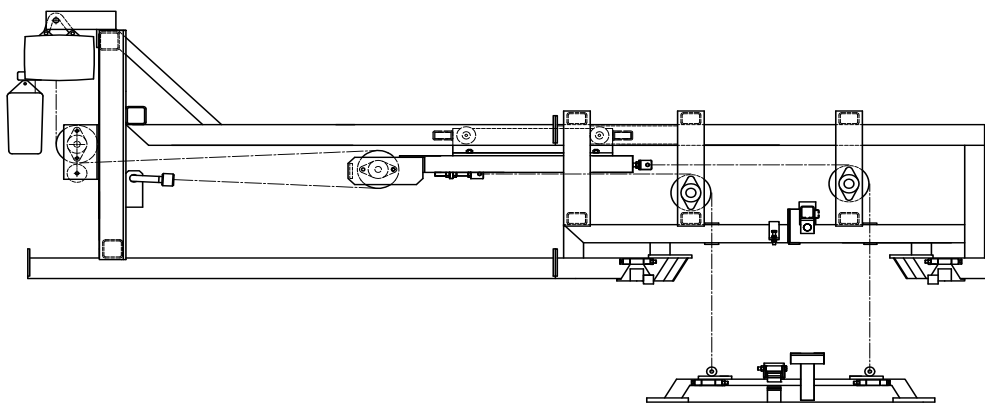
050301

The turntable is supported on ball bearings, resulting in easy operation. Supplied as standard designed for manual operation to turn through 90°. Can also be equipped with pneumatic control.



Drop section

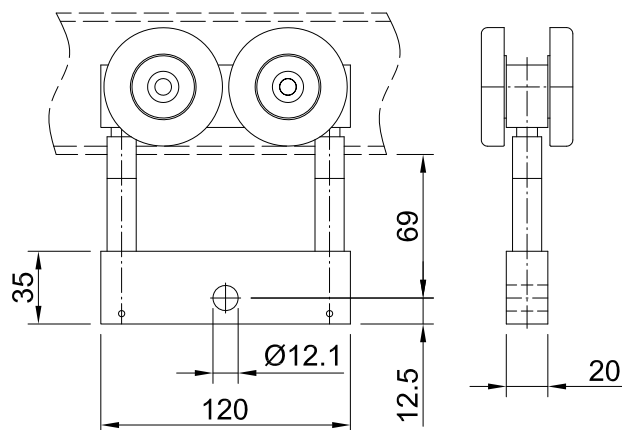
The height adjustable station can be raised or lowered by means of an electric, pneumatic or hydraulic drive mechanism.



Trolley

Order number
330500

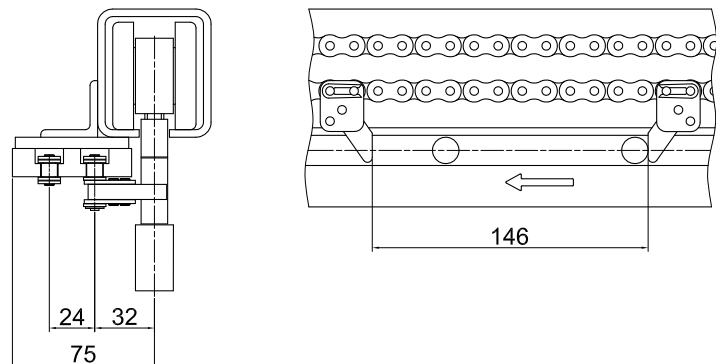
Max load: 250 kg.



Can be fitted with a joint bar to
interconnect 2 trolleys.

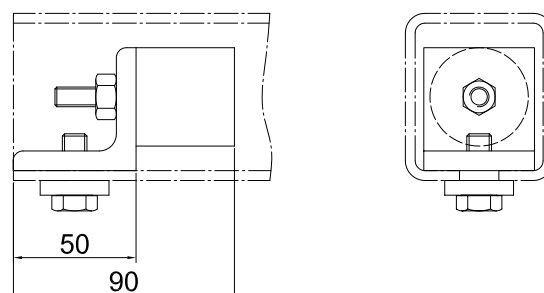
Side drive

Used for automatic forwarding of loads.



End stop

Order number
030360



Inspection unit

Order number
100200

Used to insert or remove trolleys from the track.

