



The HJORT-CONVEYOR 1200 Series overhead chain conveyor is a smaller version of the 1000 Series and is designed primarily for lighter loads.

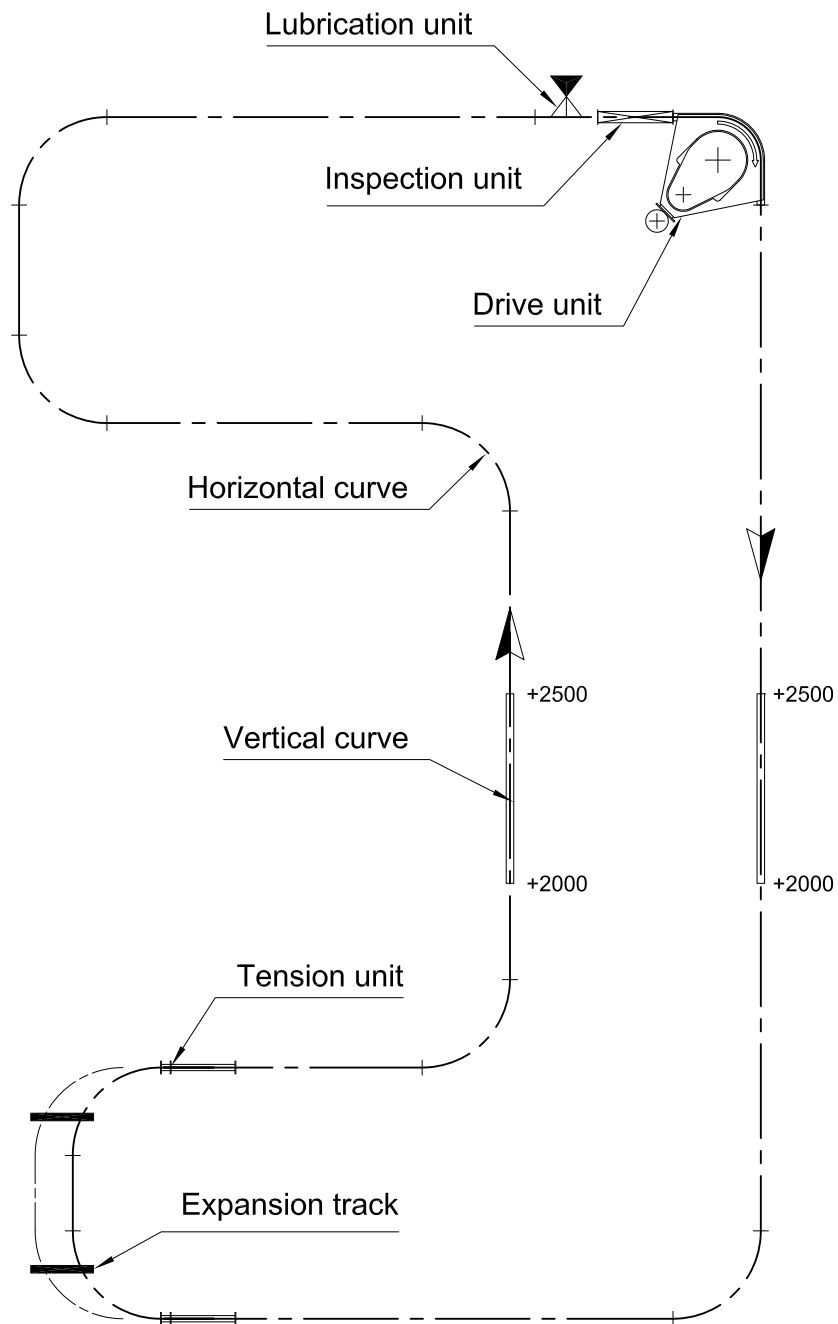
The conveyor is normally suspended from the shop ceiling but can also be mounted on floor-standing pillars.

The conveyor is available with automatic loading and unloading, for example by industrial robots.

The drive unit can be supplied with frequency controlled speed regulation, thus allowing the speed to be adapted to suit various products or production times.

The overhead chain conveyor 1200 Series has many applications, for example, surface treatment plants, "living stores", and for long internal transports.

Maximum point load 25 kg





Specifications

The cardan chain for the overhead chain conveyor 1200 Series is equipped with guide and load rollers of hardened steel running on ball bearings. The standard version of the chain is lubricated for a working temperature of 250°C.

For loads from 25 to 50 kg the cardan chain must be equipped with load bars.

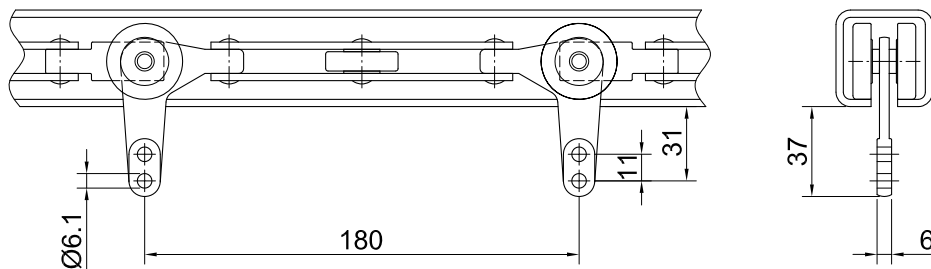
See example on page 1200-20.

Technical data

UTS min.	14,000 N
Max. load	25 kg per hook
Load pitch	180 mm
Weight	1.9 kg per m
Horizontal curves	radius 315, 500, 700 mm
Vertical curves	radius 700 mm

Order number

121060

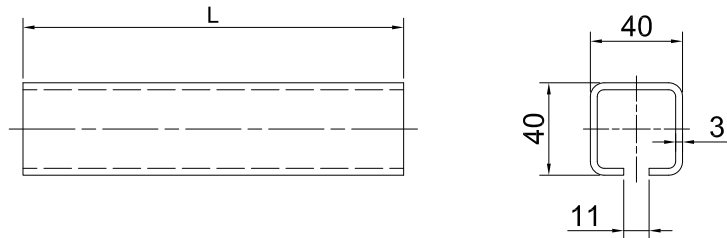


Track

Order number
120010

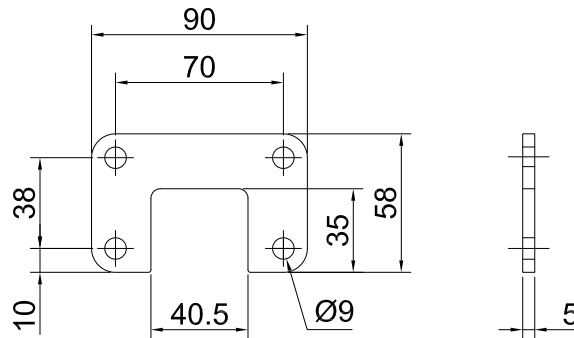
Technical data

$I_x = 8.2 \times 10^4 \text{ mm}^4$
 $W_x = 3.8 \times 10^3 \text{ mm}^3$
 $I_y = 9.6 \times 10^4 \text{ mm}^4$
 $W_y = 4.8 \times 10^3 \text{ mm}^3$
 $A = 390 \text{ mm}^2$
Weight = 3.1 kg/m



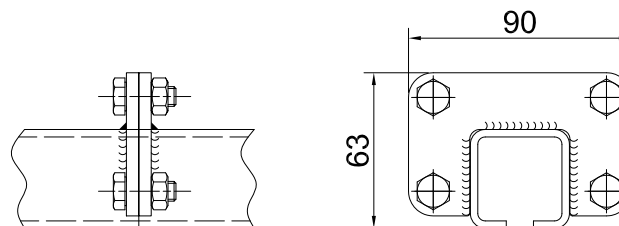
Flange

Order number
120610



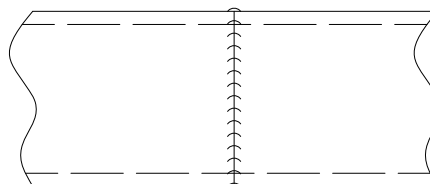
Flange joint

Order number
122840



Welded joint

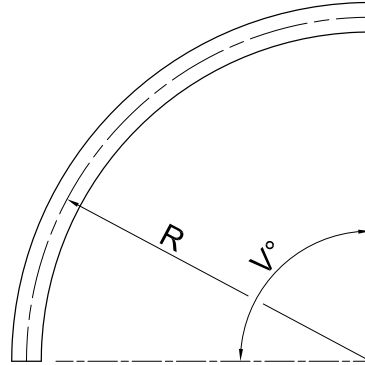
Order number
122830



Horizontal curve 90°

Order number
120050 - R 315
120060 - R 500
120070 - R 700

Other angles and radius can
be ordered.

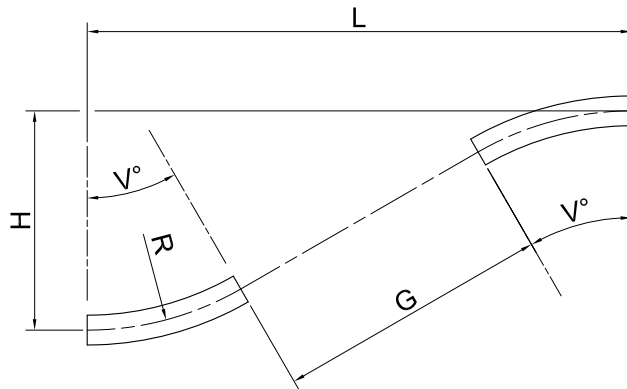


Vertical curve 45°

Order number
120120 - R 700 up
120130 - R 700 down

Other angles can be ordered.

Symbol

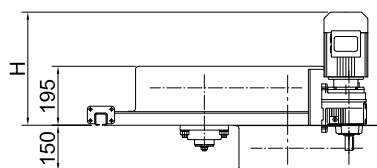


Specifications

Drive units are available with geared motors for fixed or variable speeds.
 The drive units have dry plate clutches as a protection against overloads.
 The length of the cardan chain per drive unit must not exceed 150 m.

Technical data

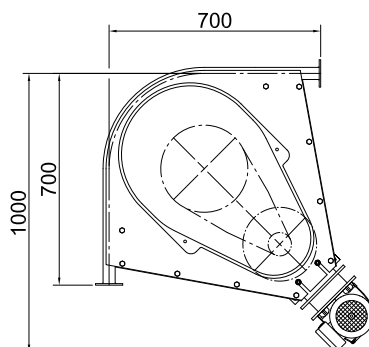
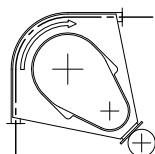
Gear ratio 1:9
 Radius 315 mm
 Max. pulling power 3,000 N
 Chain movement 1,980 mm per revolution
 (main shaft)



Order number

120150 P=180

Symbol



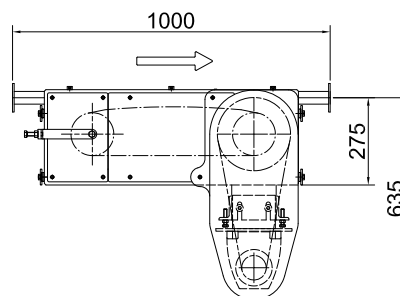
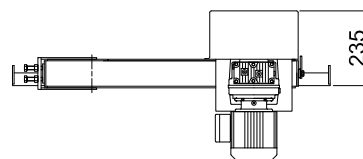
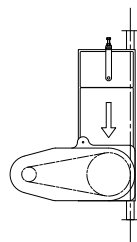
Technical data

Gear ratio 1:3
 Max. pulling power 3,000 N
 Chain movement 420 mm per revolution
 (main shaft)

Order number

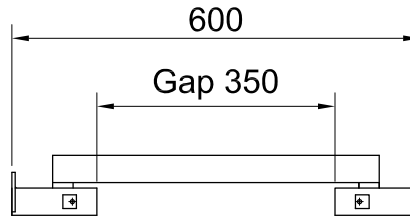
120160 P=180

Symbol

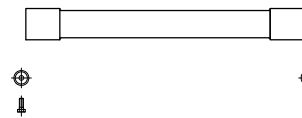


Inspection unit

Order number
120200

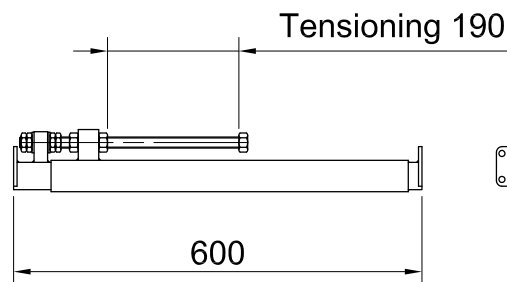


Symbol

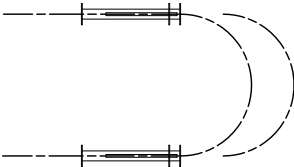


Tension unit

Order number
120260

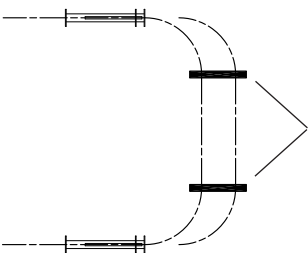
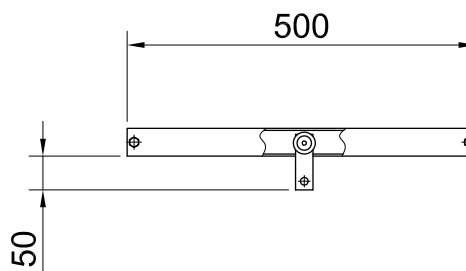


Symbol



Expansion track

Order number
120300



Symbol

Specifications

The mist lubrication unit is also available with on/off valves for remote control.

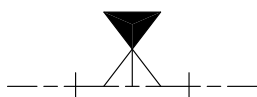
Technical data

Length 500 mm

Order number

100510

Symbol



The inverted conveyor track prevents dirt and oil falling from the chain.

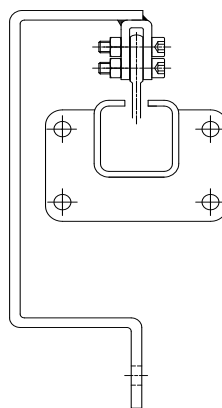
Technical data

Load pitch min. 180 mm
Max. load 25 kg per hook



C-hooks

The dimensions of the C-hook depend on the gradient of the vertical curves and the distribution and weight of the loads.



Automatic rotation
without fixed positions



Manual rotation with
fixed positions

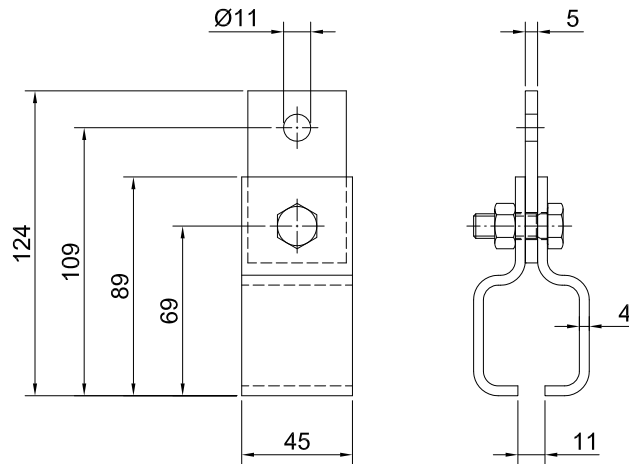


Automatic rotation
with fixed positions



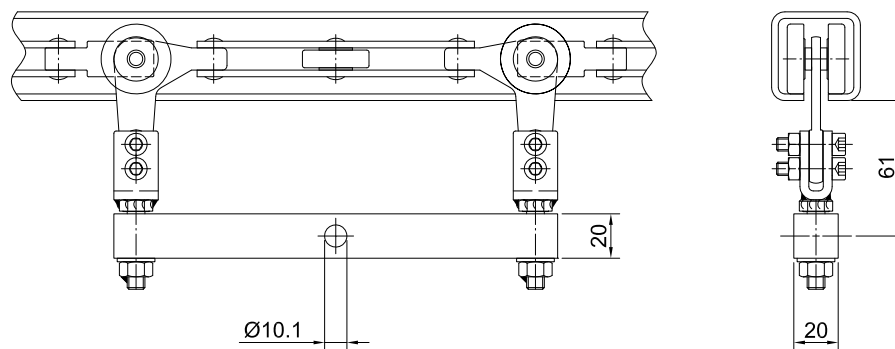
Track suspension clamps

Order number
120350

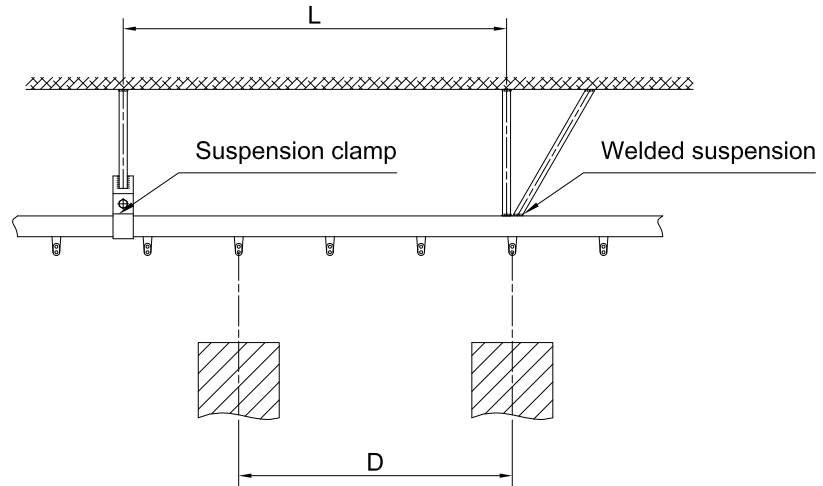


Load bar

Order number
120450



Suspension of overhead conveyor



Diagram

Dimensioning of suspension distance for conveyor track.

