

The HJORT-CONVEYOR 1000 Series overhead chain conveyor is a closed system with a cardan chain running inside a steel rail. Loads hang directly from the suspension points on the chain.

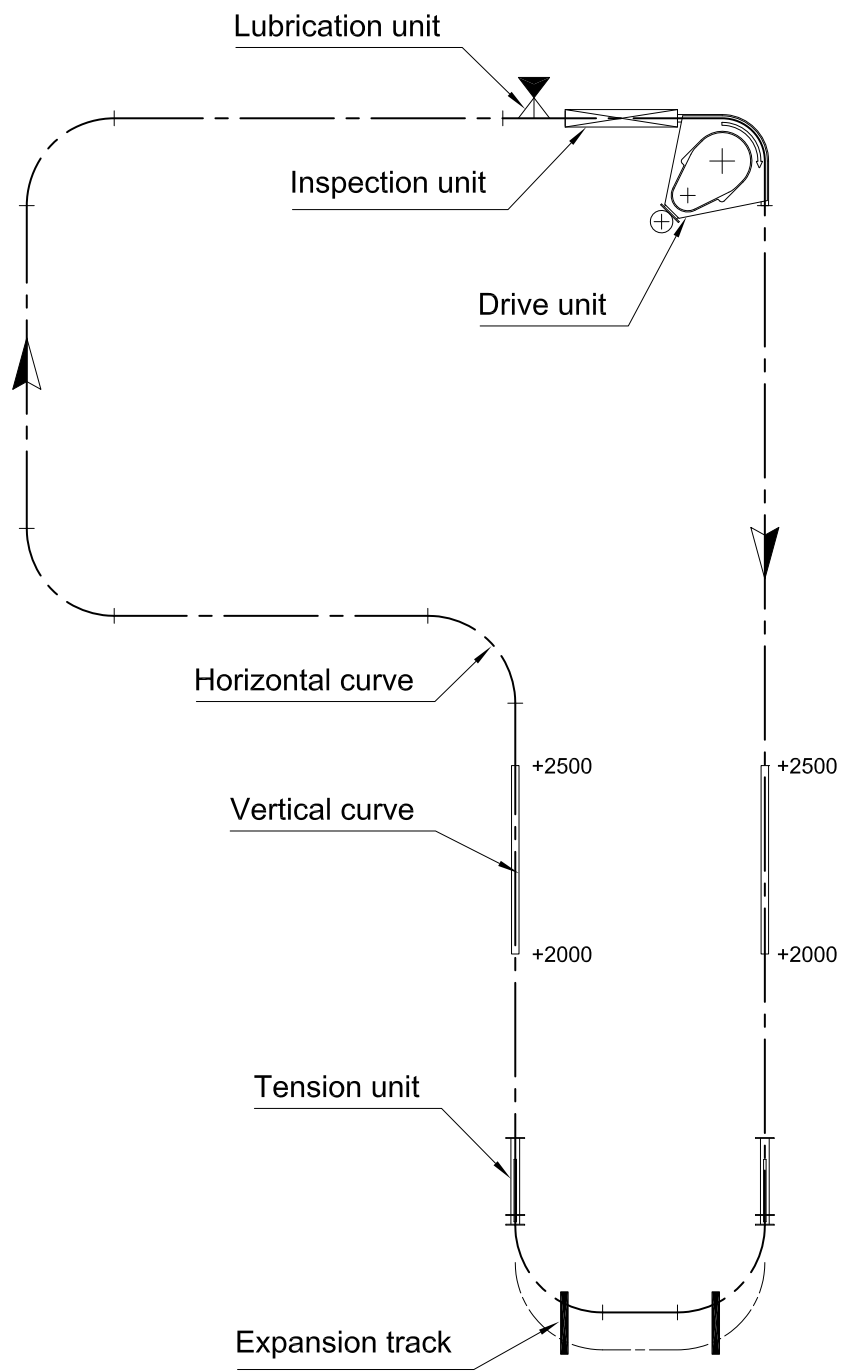
The conveyor is normally suspended from the shop ceiling but can also be mounted on floor-standing pillars.

The conveyor is available with automatic loading and unloading, for example by industrial robots.

The drive unit can be supplied with frequency controlled speed regulation, thus allowing the speed to be adapted to suit various products or production times.

The overhead chain conveyor 1000 Series has many applications, for example, surface treatment plants, "living stores", and for long internal transports.

**Maximum point load 125 kg**





### Specifications

The cardan chain for the overhead chain conveyor 1000 Series is equipped with guide and load rollers of hardened steel running on ball bearings. The standard version of the chain is lubricated for a working temperature of 250°C.

The guide and load rollers are also available in plastic with moulded-in ball bearings.

For loads from 125 to 250 kg the cardan chain must be equipped with load bars.

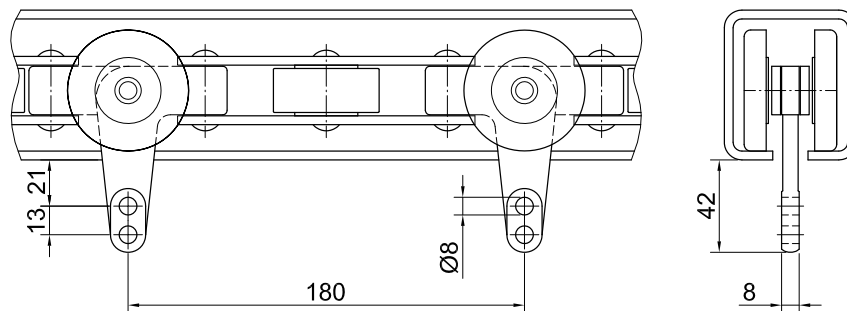
See example on page 1000-20.

### Technical data

UTS min.	40,000 N
Max. load	125 kg per carrier
Load pitch	180 mm
Weight	6.5 kg per m
Horizontal curves	radius 315, 500, 700, 1000 mm
Vertical curves	radius 700, 1200, 2000 mm

### Order number

102000





### Specifications

The cardan chain for the overhead chain conveyor 1000 Series is equipped with guide and load rollers of hardened steel running on ball bearings. The standard version of the chain is lubricated for a working temperature of 250°C.

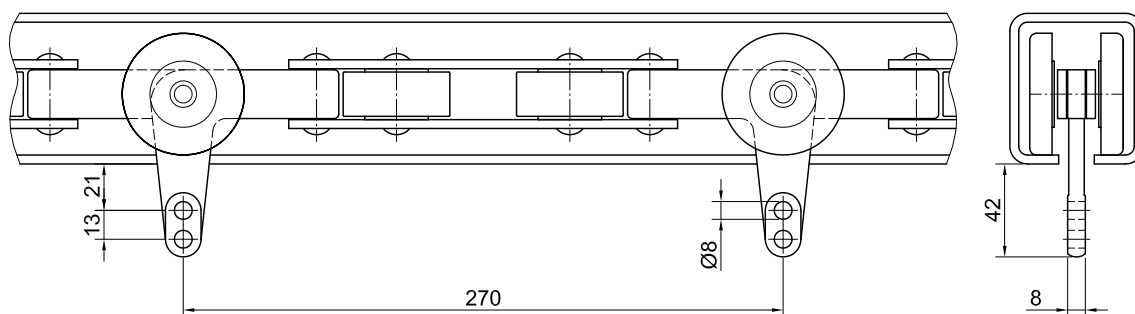
The guide and load rollers are also available in plastic with moulded-in ball bearings. For loads from 125 to 250 kg the cardan chain must be equipped with load bars. See example on page 1000-20.

### Technical data

UTS min.	40,000 N
Max. load	125 kg per carrier
Load pitch	270 mm
Weight	6.3 kg per m
Horizontal curves	radius 500, 700, 1000 mm
Vertical curves	radius 1200, 2000 mm

### Order number

102020





### Specifications

The cardan chain for the overhead chain conveyor 1000 Series is equipped with guide and load rollers of hardened steel running on ball bearings. The standard version of the chain is lubricated for a working temperature of 250°C.

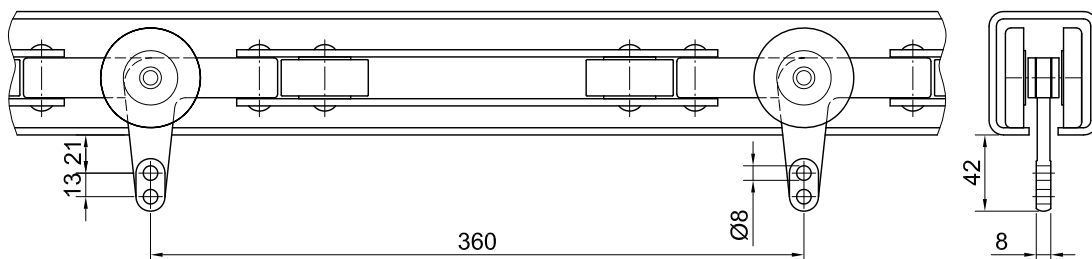
The guide and load rollers are also available in plastic with moulded-in ball bearings. For loads from 125 to 250 kg the cardan chain must be equipped with load bars. See example on page 1000-20.

### Technical data

UTS min.	40,000 N
Max. load	125 kg per carrier
Load pitch	360 mm
Weight	5.3 kg per m
Horizontal curves	radius 700, 1000 mm
Vertical curves	radius 2000 mm

### Order number

102040

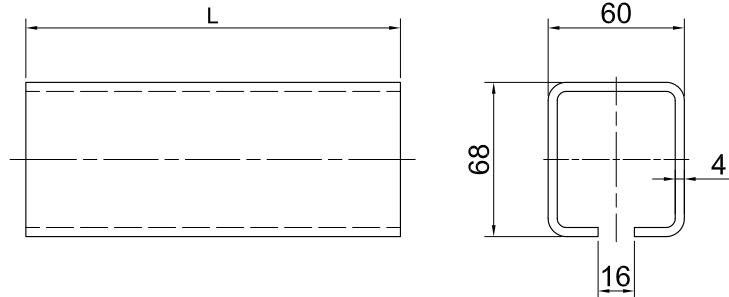


**Track**

Order number  
100010

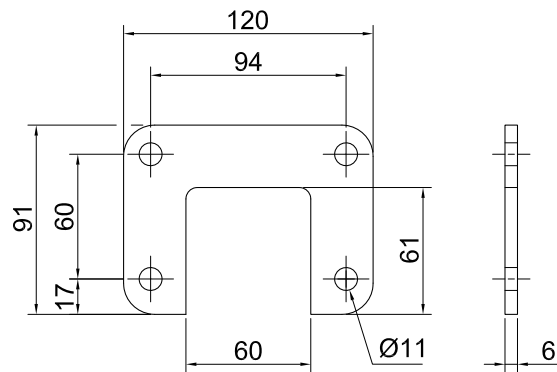
**Technical data**

$I_x = 52 \times 10^4 \text{ mm}^4$   
 $W_x = 14 \times 10^3 \text{ mm}^3$   
 $I_y = 48 \times 10^4 \text{ mm}^4$   
 $W_y = 16 \times 10^3 \text{ mm}^3$   
 $A = 835 \text{ mm}^2$   
 Weight = 6.25 kg/m



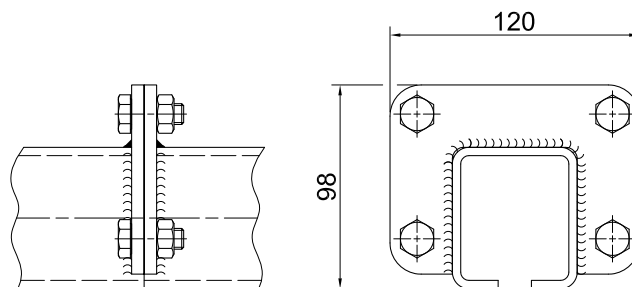
**Flange**

Order number  
100600



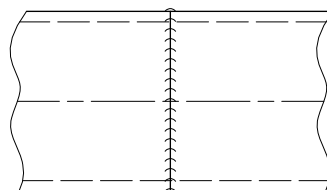
**Flange joint**

Order number  
102940



**Welded joint**

Order number  
102930



**Horizontal curve 90°**

Order number

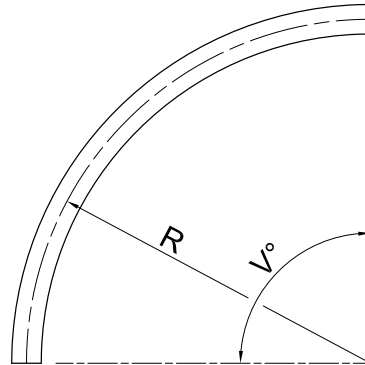
100050 - R 315

100060 - R 500

100070 - R 700

100080 - R 1000

Other angles and radius can be ordered.



**Vertical curve 45°**

Order number

100100 - R 700 up

100110 - R 700 down

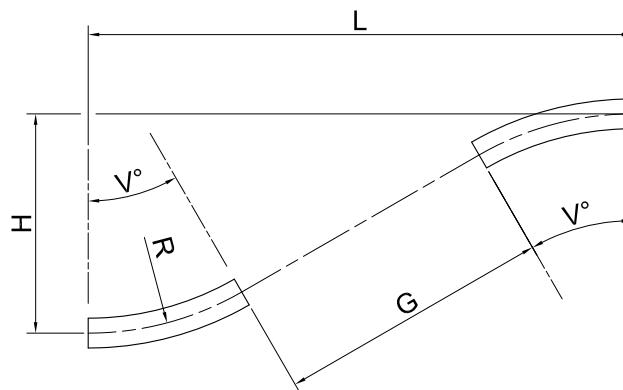
100131 - R 1200 up

100132 - R 1200 down

100135 - R 2000 up

100136 - R 2000 down

Other angles can be ordered.



**Symbol**

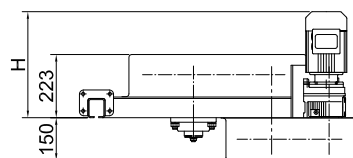


**Specifications**

Drive units are available with geared motors for fixed or variable speeds.  
The drive units have dry plate clutches as a protection against overloads.  
The length of the cardan chain per drive unit must not exceed 200 m.

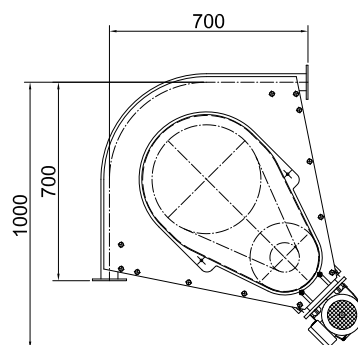
**Technical data**

Gear ratio 1:12  
Radius 344 mm  
Max. pulling power 8,000 N  
Chain movement 2,160 mm per revolution  
(main shaft)

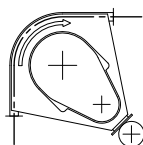


**Order number**

100151 P=180  
100154 P=270/2  
100156 P=360/2



**Symbol**



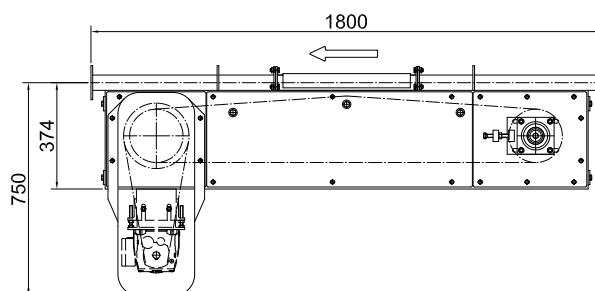
**Technical data**

Gear ratio 1:3  
Max. pulling power 8,000 N  
Chain movement 585 mm per revolution  
(main shaft)

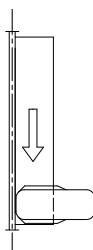


**Order number**

100180 P=180  
100191 P=270/2  
100195 P=360/2



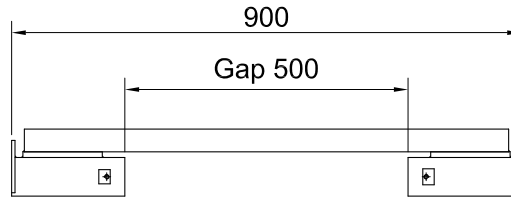
**Symbol**



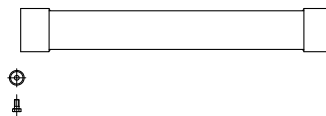


**Inspection unit**

Order number  
100200

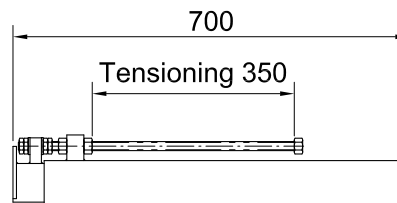


**Symbol**

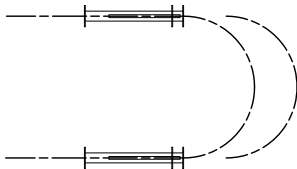


**Tension unit**

Order number  
100260

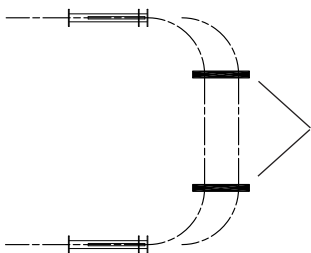
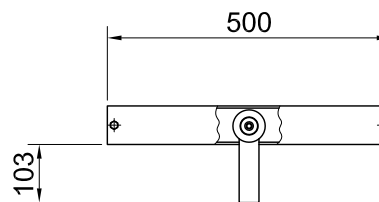


**Symbol**



**Expansion track**

Order number  
100300



Symbol

### Specifications

The mist lubrication unit is also available with on/off valves for remote control.

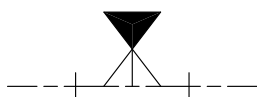
### Technical data

Length 500 mm

### Order number

100510

### Symbol



The inverted conveyor track prevents dirt and oil falling from the chain.

**Technical data**

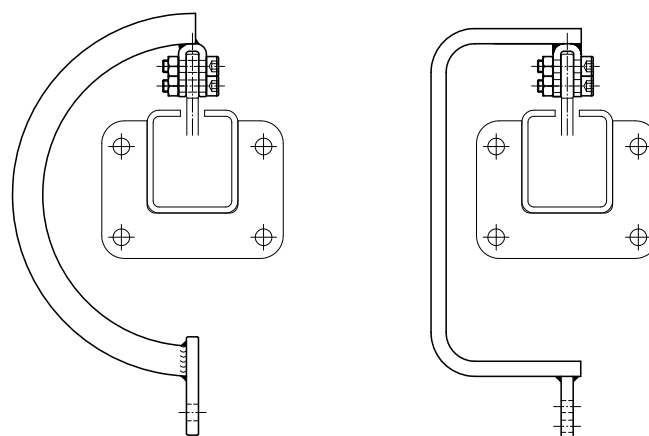
Load pitch     min. 180 mm  
Max. load       125 kg per hook



---

**C-hooks**

The dimensions of the C-hook depend on the gradient of the vertical curves and the distribution and weight of the loads.



## Rotating load pendants

Automatic rotation  
without fixed positions



Manual rotation with  
fixed positions

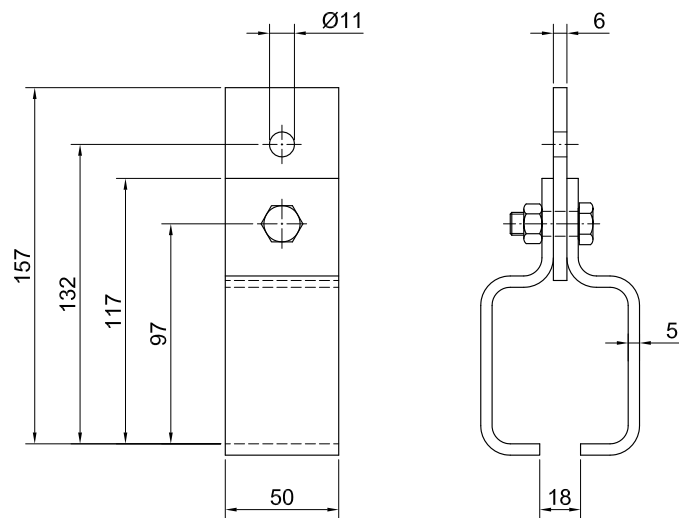


Automatic rotation  
with fixed positions



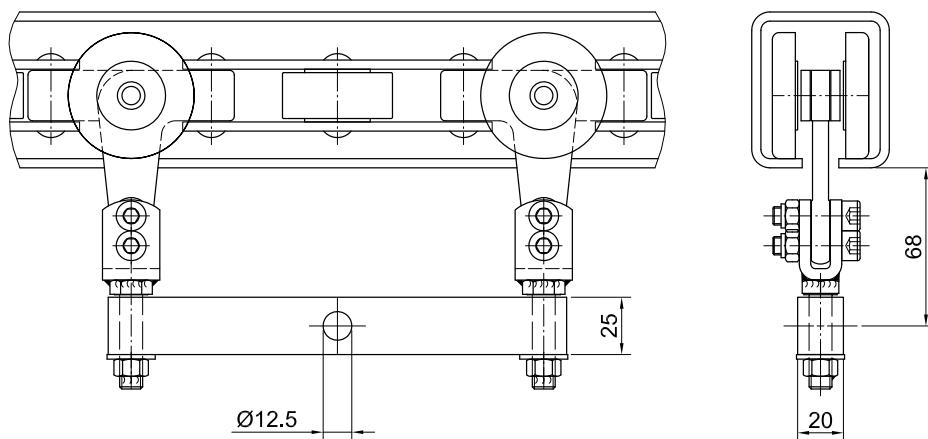
### Track suspension clamps

Order number  
100350

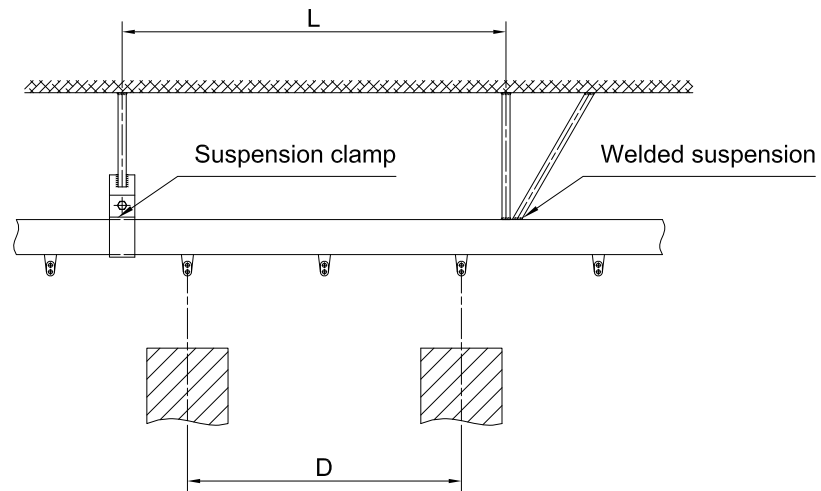


### Load bar

Order number  
100450 P=180

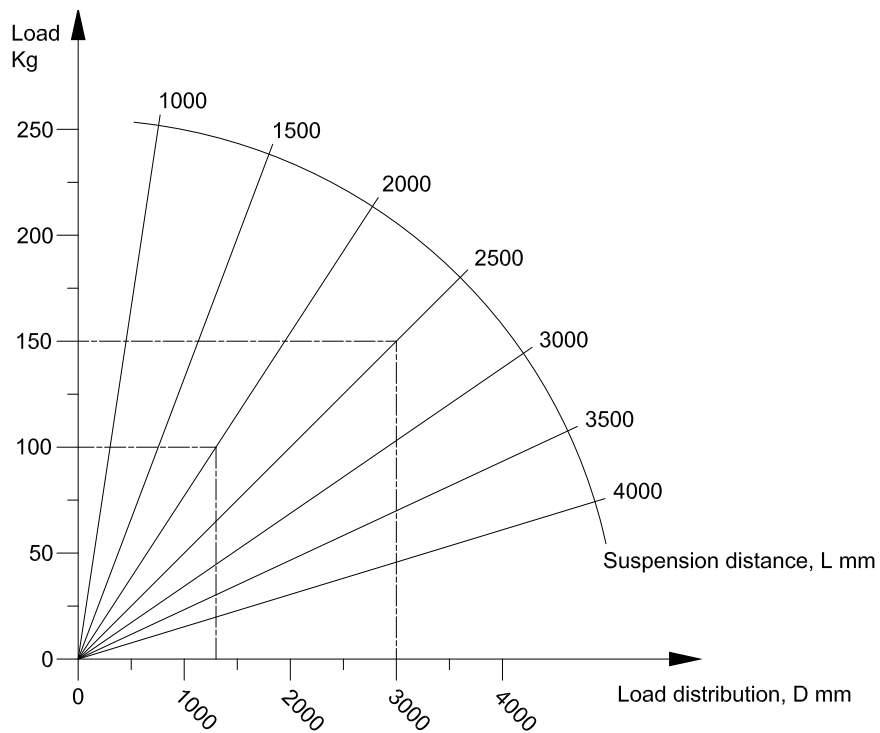


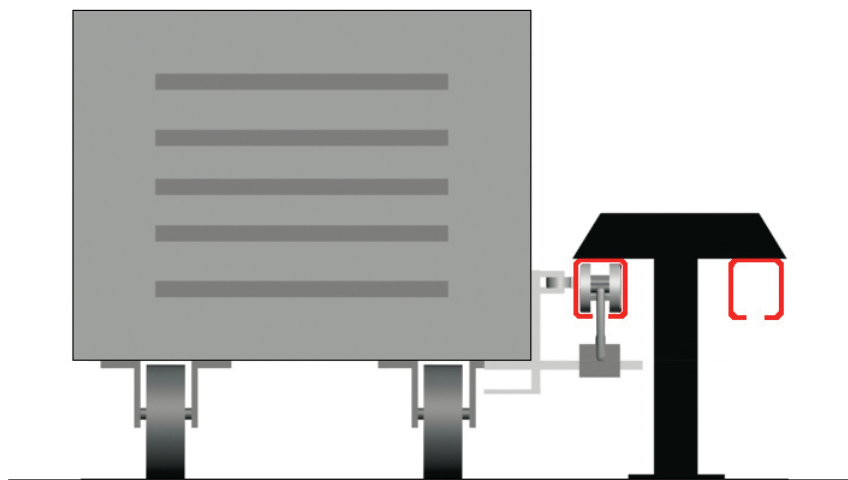
### Suspension of overhead conveyor



### Diagram

Dimensioning of suspension distance for conveyor track.

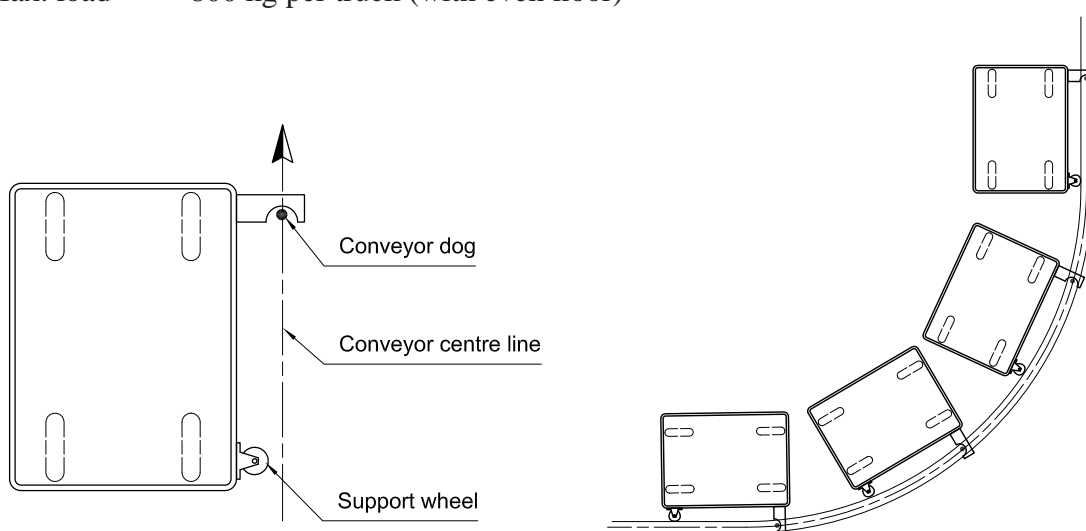


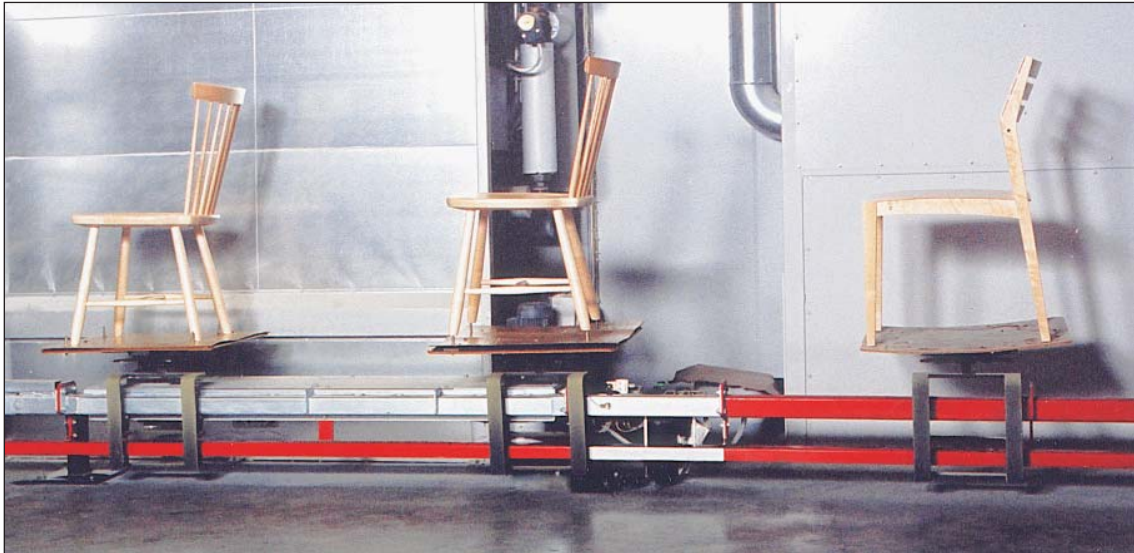


The cardan chain is fitted with dogs at the requisite intervals. The trucks are coupled and uncoupled manually. Chain speed may be fixed or continuously variable. The radius of the horizontal curves is dependent on truck length and the distance between the dogs (see sketch below).

**Technical data**

Max. speed 8 m per minute  
Max. load 800 kg per truck (with even floor)





A number of different types of floor conveyors are available depending on the load and operational mode.

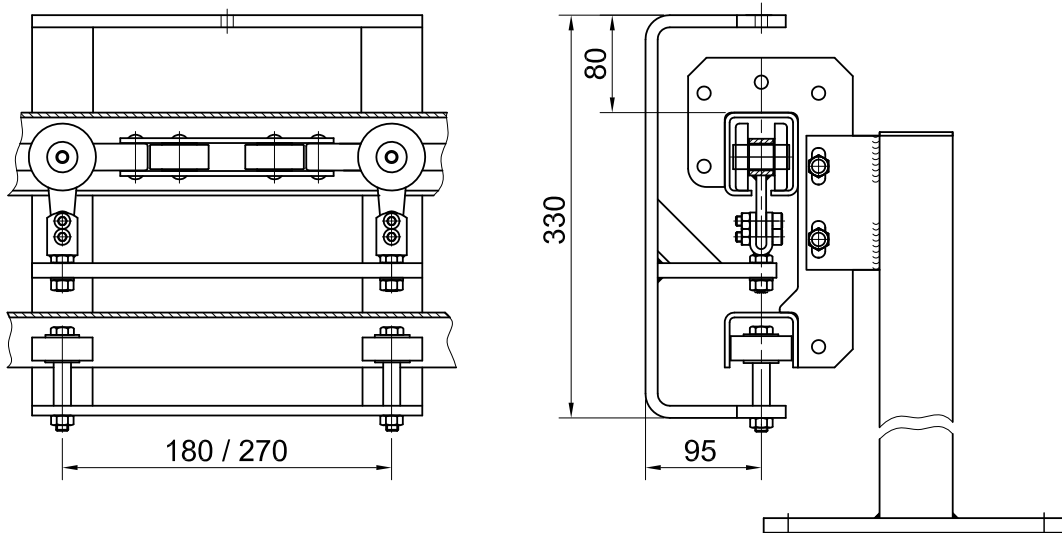
They have two things in common, namely, the cardan chain runs in a steel track and the load is positioned above the track.

The floor conveyor is fitted on floor-mounted pillars and the load can be rotated or indexed.

The floor conveyor can be operated continuously or intermittently.







### Specifications

The floor conveyor track comprises two track parts attached together. The cardan chain runs in the upper part and is driven by one or more drive units with fixed or variable speed. The lower part functions as a guide for the load carriers and ensures an even and stable operation with only small angular deviations.

The design of the load carriers depends on the application and they can be equipped with rotating units for indexed or continuous rotation.

### Technical data

Max. ambient temperature	250°C
Max. load per carrier	200 kg
Horizontal curves	radius 700, 1000 mm